

Bourdon Tube Pressure Gauge Applications

Having been in existence since 1849, the Bourdon tube pressure gauge is one of the most commonly used pressure gauges of the 21st Century, thanks to its extreme sensitivity and accuracy. As one of the most popular kinds of pressure gauge, it has been manufactured in countries all over the world for use in many applications. Here, [MGA Controls](#) looks at popular Bourdon tube pressure gauge applications.

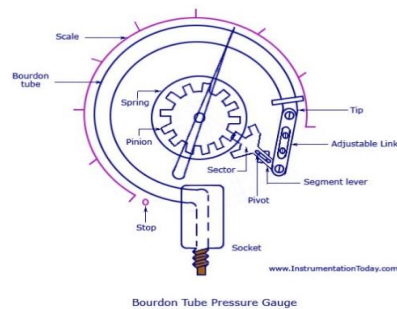
Bourdon tube pressure gauge uses

The selection of a [Bourdon tube pressure gauge](#) will mainly depend on the material composition of the gauge. For those made of durable stainless steel, the gauge can be applied to arduous applications that require high purity levels, due to their higher resistance. However, more commonly, the gauges are used in conjunction with gaseous or liquid media, which aren't particularly highly viscous.

Common applications for a bourdon tube include:

- Machine and plant engineering
- Gas distribution
- Aerospace
- Automotive
- Chemical
- Marine
- Medical
- Water
- Waste
- Fire
- Food
- Heating
- Ventilating
- General Industries

As illustrated above, the Bourdon gauge can be used in almost any industrial application, depending on the specific build. When you speak to an experienced bourdon tube supplier, such as [MGA Controls](#), they will be able to assist you when choosing the gauge that is right for your specific industry and need.



Suitable pressure measurement levels

Standard [Bourdon tube pressure gauges](#) can measure ranges covering anything between 0.6 - 1,000 bar. However, those with increased corrosion resistance, manufactured entirely from stainless steel can measure pressure from -1 through to 7,000 bar, in gas or liquid media and aggressive environments.

[MGA Controls](#) has a wide range of Bourdon tube pressure gauges available in stock. For more information about our pressure gauges, please contact our expert technical team by calling **01704 898980** or emailing store@mgacontrols.com.

