

- > **3/2 way**
Port size: G1/2, G3/4, G1, 1/2", 3/4" or 1" PFT
- > **Lockable only in the "off" position**
- > **Clear visual indication when in the "on" position**
- > **High exhaust flow**
- > **Helps you to comply to OSHA regulation 29 CFR 1910.147 - The control of hazardous energy (lockout/tagout)**



Technical features

Medium:

Compressed air

Operation:

Inline lockout valve

Operating pressure:

0 ... 20 bar (0 ... 290 psi)

Port size:

G1/2, G3/4 or G1
1/2", 3/4" or 1" PTF

Mounting position:

Optional

Ambient/Media temperature:

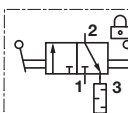
-30 ... +80°C (-22 ... +176°F)
Air supply must be dry enough to avoid ice formation at temperatures below +2°C (35°F).

Materials:

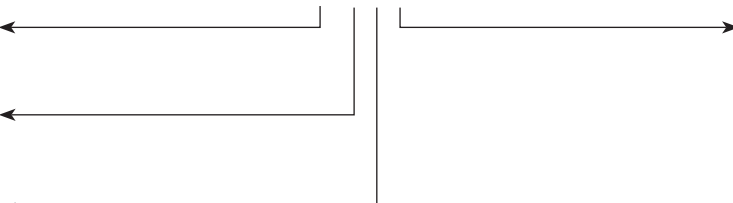

Valve body: Aluminum
Silencer base: Zinc
Spool, T-Handle, silencer shell: Aluminum
Spring detent: Stainless steel
Elastomers: NBR and PUR

Technical data




Standard models with silencer

Symbol	Basic size	Port size	Flow		Handle colour	Weight		Model
			1 » 2 (l/min)	2 » 3 (l/min)		(kg)	(lbs)	
	1/2"	G1/2	8200	6970	Red	0,95	2	CR043C
		1/2" PTF	8200	6970	Black	0,95	2	C0023C
		G3/4	11120	7590	Red	0,92	2	CR043D
		3/4" PTF	11120	7590	Black	0,92	2	C0023D
	1"	G1	14300	8120	Red	1,88	4.1	CR044B
		1" PTF	14300	8120	Black	1,88	4.1	C0024B


Option selector

Handle colour	Substitute	C★0★★★	Port size	Substitute
Red	R			1/2" (1/2" base size)
Black	0	3/4" (1/2" base size)		D
Thread form	Substitute		1" (1" base size)	B
PTF	2			
ISO G	4			
Base size	Substitute			
1/2"	3			
1"	4			

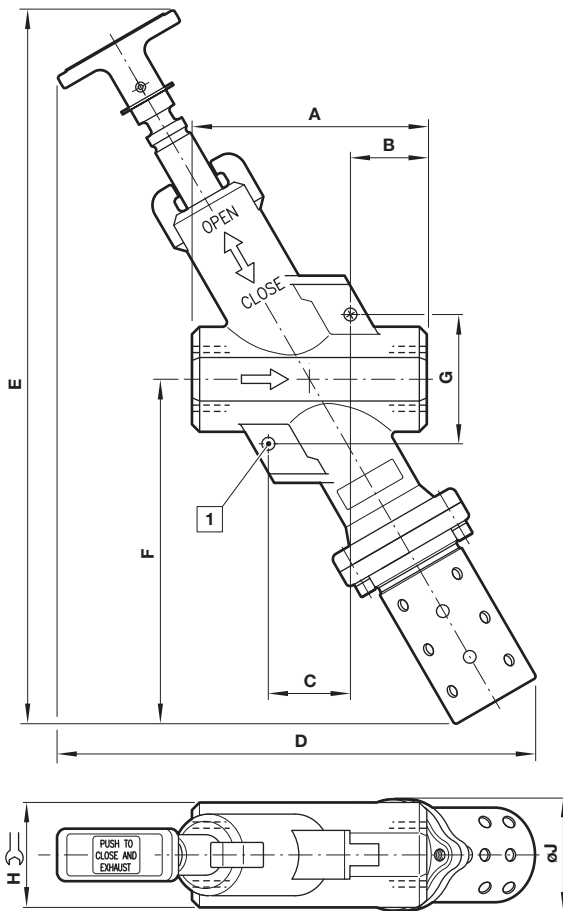
Accessories

	Replacement silencer	Lockout hasp	Padlock with two keys
Base size			
1/2"	ML004F	54547-01	0613633 (brass)
1"	ML008F		

Repair kits

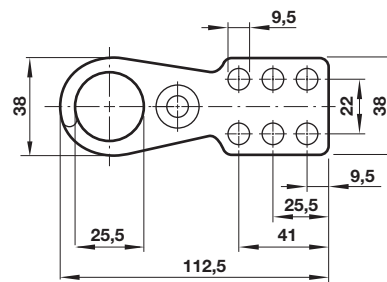
Repair kits

53474-43 (NBR - 1/2" base size)
53475-34 (NBR - 1" base size)

Drawings

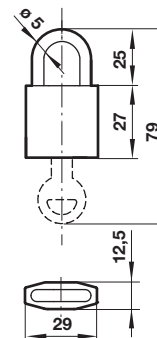


Lockout hasp

Dimensions in mm
Projection/First angle



Padlock



1 Hole dia 7 mm

Basic size	A	B	C	D	E	F	G	H	ØJ
1/2"	102	35	32	202	299	136	57	48	48
1"	127 (131)	41 (43)	44	266	399	198	77	57	54

() = values for PTF version

Warning

These products are intended for use in industrial compressed air systems only. Do not use these products where pressures and temperatures can exceed those listed under »Technical features/data«.

Before using these products with fluids other than those specified, for non-industrial applications, life-support systems or other applications not within published specifications, consult IMI NORGREN.

Through misuse, age, or malfunction, components used in fluid power systems can fail in various modes.

The system designer is warned to consider the failure modes of all component parts used in fluid power systems and to provide adequate safeguards to prevent personal injury or damage to equipment in the event of such failure.

System designers must provide a warning to end users in the system instructional manual if protection against a failure mode cannot be adequately provided.

System designers and end users are cautioned to review specific warnings found in instruction sheets packed and shipped with these products.