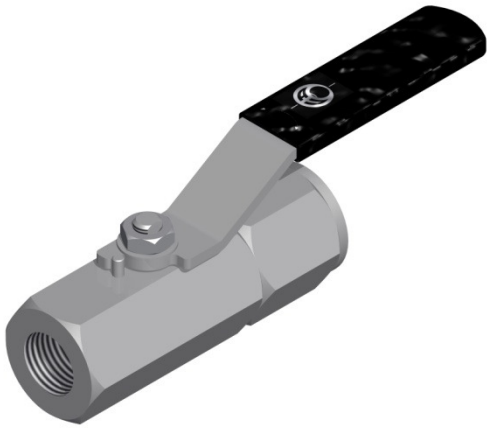


'UB' SERIES BALL VALVE



Ball Valves 10,000 PSI

Alco are aware of the ever increasing operating pressures demanded by industry, and for this reason have developed the 'UB' range of valves to accommodate these stringent requirements. The UB series high pressure valve has a working pressure of 10,000psi with a body test at 15,000psi. The UB series is a tried and tested rugged design for high pressure applications. It comes with panel mounting holes and stainless steel handle as standard. Service / repair kits are available to prolong service / field life. Many options available such as locking device.

DESIGN FEATURES

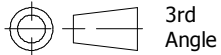
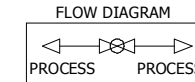
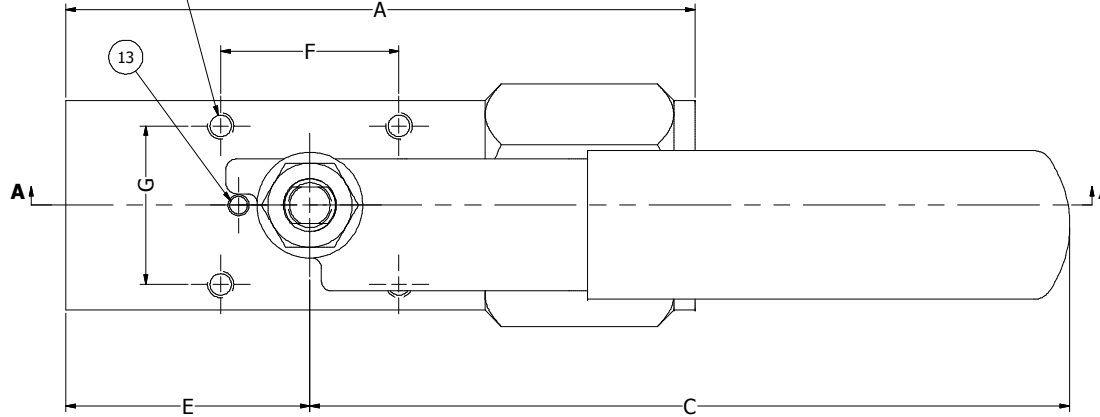
<ul style="list-style-type: none">• 2 piece design for safety.	<ul style="list-style-type: none">• Temperature range -40°C to 230°C as standard (other temperatures available on request)
<ul style="list-style-type: none">• Quick 90° operation, lever handle standard.	<ul style="list-style-type: none">• Renewable seats and seals for long life.
<ul style="list-style-type: none">• Bi-directional floating ball design to ensure leak-proof shut-off on pressure and vacuum.	<ul style="list-style-type: none">• Available full bore or standard bore.
<ul style="list-style-type: none">• Anti-blowout stem for safety.	<ul style="list-style-type: none">• Full material traceability.
<ul style="list-style-type: none">• Available with 4-panel mounting holes M4 x 6 deep, can be actuated (if specified).	<ul style="list-style-type: none">• Materials of construction can be supplied to meet the requirements of NACE MR 0175.

REVISIONS			
REV No.	DATE	DETAILS OF CHANGE	REV BY
1	17/03/2015	ISSUED	~

PART NO	SIZE	A	B	BORE	C	D	E	F	G	PANEL MOUNT	H (MAX)	CV	WEIGHT
UB2NS	1/4" NPT	89	37	9.5	115	32	37	27	24	M4 X 6	1.3	13.9	0.68 Kg
UB3NS	3/8" NPT	92	37	9.5	115	32	37	27	24	M4 X 6	1.3	13.9	0.73 Kg
UB4NS	1/2" NPT	95	37	9.5	115	32	37	27	24	M4 X 6	1.3	13.9	0.71 Kg
UB6NS	3/4" NPT	110	46	12.7	150	38	46	31.5	31.5	M4 X 6	2.0	25.3	1.2 Kg

ITEM	DESCRIPTION	MATERIAL	QTY
1	VALVE BODY	A479 UNS S31600	1
2	SEAT	PEEK	2
3	BALL	A479 UNS S31600	1
4	STEM	A479 UNS S31600	1
5	BODY SEAL	PTFE	1
6	END CONNECTOR	A479 UNS S31600	1
7	LEVER HANDLE	UNS S31600	1
8	BELLEVILLE WASHER	ST/ST	2
9	STEM NUT	A4 ST/ST	1
10	SPACER	UNS S31600	1
11	STEM SEAL	RTFE	1
12	ANTI-EXTRUSION SEAL	PEEK	1
13	STOP PIN	UNS S31600	1

4 OFF MOUNTING HOLES
SEE TABLE FOR THREAD SIZE

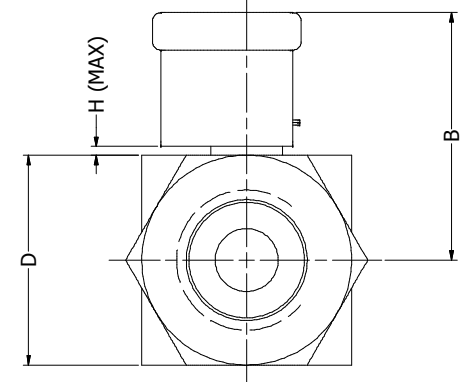
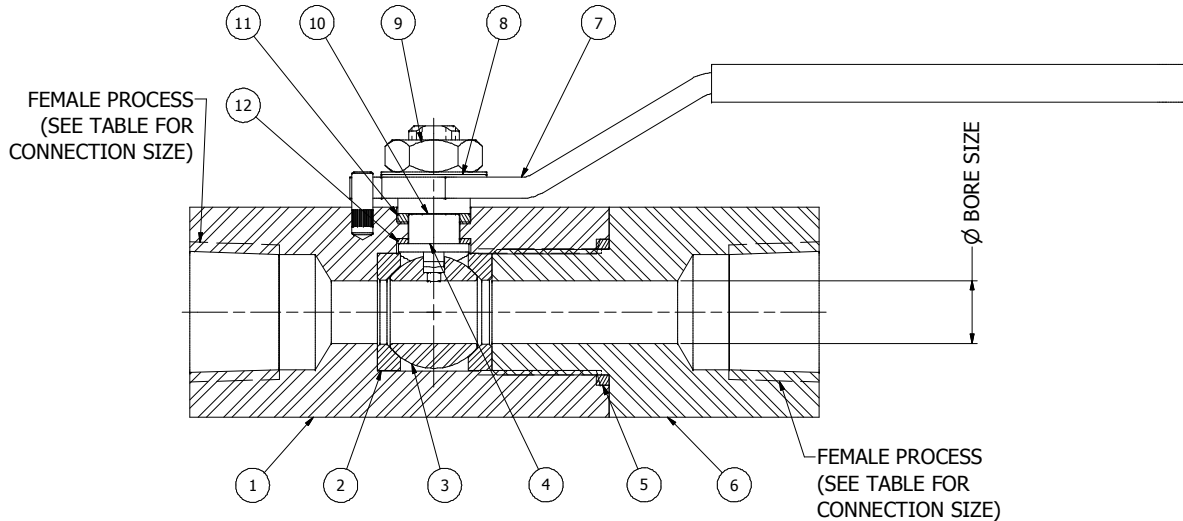


'IMPORTANT' - THIS DOCUMENT MAY CONTAIN CONTROLLED INFORMATION AND COULD THEREFORE REQUIRE EXPORT PERMISSIONS FROM RELEVANT AUTHORITIES IN YOUR COUNTRY

PRESSURE RATINGS ARE COLD WORKING, NON-SHOCK AND SUBJECT TO TEMPERATURE LIMITATIONS, UNLESS OTHERWISE STATED. PLEASE SEE SPECIFIC PRODUCT DATA

DIMENSIONS AND DESIGNS ARE SUBJECT TO CHANGE WITHOUT PRIOR NOTICE

TYPICAL VALVE LAYOUT



SECTION A-A



Alco Valves[®]
 Industrial Valve Manufacturers
 Mission Works, Birds Royd Lane, Brighouse
 West Yorkshire, HD6 1LQ - UK
 Tel: 01484 710511 Fax: 01484 713009 Intl: +44 1484 710511
 Website: www.alco-valves.com e-mail: uk@alco-valves.com

TITLE:					SCALE: N.T.S.				
1/4" TO 3/4" NPT FEMALE PROCESS x FEMALE PROCESS					DATE: 17/03/2015				
'UB' SERIES SINGLE ISOLATION BALL VALVE IN 316 ST/ST MATERIAL					DRAWING NUMBER				
COMPLETE WITH LEVER HANDLE. RATED 10,000psi.					UB#NS TABULATED				
DRWN	C.L.	CHKD	J.H.	APRD	I.M.	REVISION No.	1		