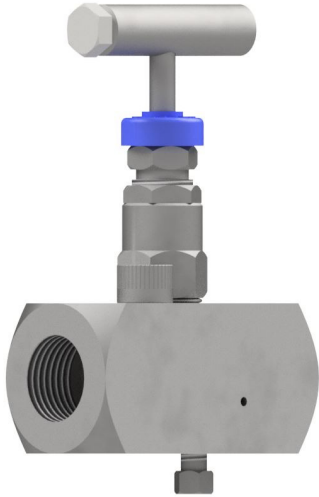


UN-V SERIES NEEDLE VALVE



Needle Valves 10,000 PSI

The precision made 'UN-V' series, single isolation hand valve utilising metal to metal seat and body to bonnet connection for superior, bubble tight sealing capabilities at both extreme pressures and temperatures. This design also provides an economical method for venting pressure on the downstream making it easy for calibrating gauges and pressure switches. The 'UN-V' series also offers non-rotating hardened tip for extended service life. The unique anti-vibration cam locking device at the body bonnet connection is for extra safety. Maximum working pressure is 10,000psi. Maximum working temperature up to 230°C and up to 427°C with GP option.

DESIGN FEATURES

<ul style="list-style-type: none">• Bubble tight metal to metal seat for positive shut off	<ul style="list-style-type: none">• Temperature range -40°C to 230°C (427°C with GP option)
<ul style="list-style-type: none">• 2 piece non-rotating hardened (17-4PH) tip for first time seal and long service life.	<ul style="list-style-type: none">• Repair / service kits available to extend field life further.
<ul style="list-style-type: none">• Metal to metal body bonnet seal for high pressure and high temperature sealing.	<ul style="list-style-type: none">• Downstream to atmosphere venting facility to enable calibration of instruments.
<ul style="list-style-type: none">• Unique bonnet locking cam. No accidental removal of head unit, or loosening due to vibration.	<ul style="list-style-type: none">• Body to bonnet ingress seal fitted as standard to prevent crevice corrosion.
<ul style="list-style-type: none">• Positive no slack stem action.	<ul style="list-style-type: none">• Full material traceability of major components.
<ul style="list-style-type: none">• Back sealing stem to extend packing life.	<ul style="list-style-type: none">• Fire-safe option available.
<ul style="list-style-type: none">• Materials of construction can be supplied to meet the latest requirements of NACE MR-01-75	<ul style="list-style-type: none">• Other connection types available, ie. BSPP, BSPT

